

November 9, 2022, Berlin – NIO, a global smart electric vehicle company, was awarded the internationally coveted Golden Steering Wheel award, winning the 'Medium and Upper Class' category with its smart electric flagship sedan, NIO ET7. Ralph Kranz, General Manager of NIO Germany, received the prestigious award at the official award ceremony held at the Axel



蔚来ET7荣获2022年度金方向盘奖

NIO ET7 Awarded the Golden Steering Wheel 2022

Springer House in Berlin. William Li, NIO's Founder, Chairman, and CEO, addressed the guests and jury, thanking them and the readers for their support. Since 1976 BILD am SONNTAG, and since 2009, AUTO BILD has awarded the Golden Steering Wheel to the best new cars. Winning the award is considered the most significant honor in the German automotive industry. Moreover, its combination of votes from both readers and an expert jury makes the Golden Steering Wheel a coveted prize for all manufacturers. This year, 47 cars across 11 categories were selected, with just three finalists from each category being assessed through rigorous tests by the expert jury at the Lausitzring track.

2022年11月9日，柏林——全球智能电动汽车公司蔚来汽车凭借其智能电动旗舰轿车蔚来ET7荣获国际梦寐以求的金方向盘奖，荣获“中高档”类别。蔚来德国总经理拉尔夫·克兰兹（Ralph Kranz）在柏林阿克塞尔·施普林格故居举行的官方颁奖典礼上接受了这一享有盛誉的奖项。蔚来汽车创始人、董事长兼首席执行官李斌向嘉宾和评委会致辞，感谢他们和读者的支持。

“金方向盘”奖评选1976年在德国创立，因其专业性与权威性，该奖项有着“汽车界的奥斯卡奖”之称，被认为是全球汽车行业的最高荣誉之一。此外，它结合了读者和专家评审团的投票，使金色方向盘成为所有制造商梦寐以求的奖项。今年，共有11个类别的47辆赛车入选，每个类别只有三名决赛选手通过劳西茨林赛道专家评审团的严格测试进行评估。

蔚来汽车的成功标志着制造商在上市几周后首次获得此类奖项。“蔚来ET7让黄金方向盘评审团的几乎所有人都感到惊讶，并深信不疑，”Tom Drechsler说。“良好的座椅，精细的触感，一流的整体性能，NOMI令人惊叹。它可以毫不费力地滑行并提供高性能，这要归功于广泛的驾驶模式。

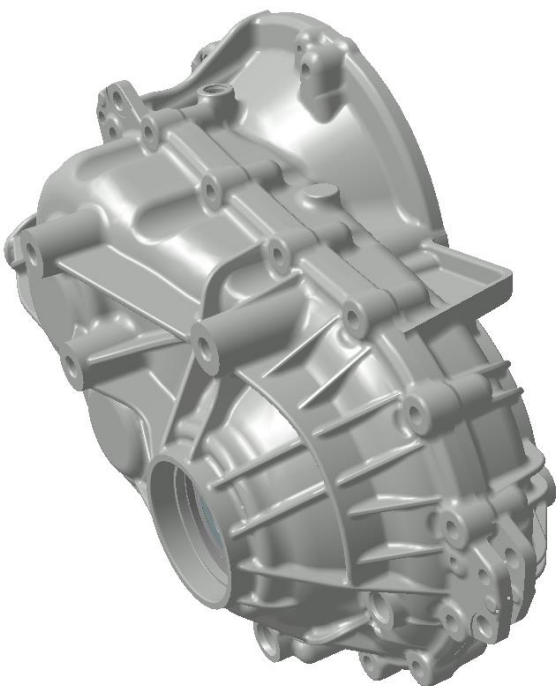
Improvement of disassembly capacity 拆卸能力提升

With the input of the second production line of the company, the tasks in the production and disassembly area have become more onerous. In order to keep up with the pace of production, our company recently launched a new batch of disassembly tooling to improve the disassembly capacity. The daily disassembly volume has increased by 50%, which can completely cover the disassembly tasks of the normal production of the two lines. At present, we are planning to empty the parts to be disassembled at the edge of the line to ensure the normal operation of the production line. 随着公司第二条产线的投入，生产拆卸区的任务也变得更加繁重，为了跟上生产节奏，最近我司新上线了一批拆卸工装提升拆卸产能，单日的拆卸量有了50%的提升，可以完全覆盖两条线正常生产的拆卸任务。目前，我们正在有计划的清空线边的待拆件，保证生产线日常正常运行。



(编辑 李蕾 Edit by Lei.Li)

EG2000S - Mercury Platform



Mercury platform is a two-stage transmission gearbox, with a maximum speed of 14,000rpm and a maximum output torque of 2100N. m. It is the first low torque platform gearbox independently developed by Weibang. This gearbox can carry A00, A0 passenger cars, etc., which can make up for the lack of gearbox for small vehicles. At present, the electrification trend represented by A00 and A0 electric vehicles with this torque is growing rapidly, and then extends to the middle and high-end, It presents a good trend of balanced development of electric vehicles at all levels, which has become a huge trend in the development of electrification, and also promotes the gradual balance of the structure of the entire passenger car market.

水星平台是一款两级传动的减速箱，最高转速14000rpm，最大输出扭矩2100N.m，为蔚邦首款自主开发的低扭矩平台减速箱，该款减速箱可搭载A00、A0级乘用车等，能够弥补目前小型车辆用减速箱的空缺，目前该扭矩的车辆以电动车A00、A0级为代表的电动化趋势快速成长，随后向中高端延伸，呈现电动车各级别均衡发展的较好态势，成为电动化发展的巨大趋势，也推动整个乘用车市场的结构逐步均衡。

Be Strong, Weibang 居家办公不松懈 各司其职保效率

In the afternoon of October 25, a person with abnormal nucleic acid detection was found near Weibang, and the development zone immediately began to block the relevant areas. Several epidemic areas, including Weibang, have been blocked one after another, and all employees have started to work at home. In the face of the coming epidemic, Weibang has not given up, but insisted on fighting the epidemic together to tide over the difficulties: during the period of staying at home, it counts the daily personal health of employees, summarizes the work content, and actively cooperates with the leaders in work arrangements. HR Department not only pays close attention to the daily epidemic situation to prepare for the early resumption of work, but also cooperates with the Procurement Department to purchase closed-loop production materials. What changes is the office location, but what remains unchanged is the office attitude. The fight against the epidemic is a battle in which no one can stand aloof. A computer and a mobile phone are always online with their responsibilities in mind.

10月25日下午，蔚邦所在地附近发现一例核酸检测异常人员，随后开发区立刻开始封锁相关区域。包括蔚邦在内的几个涉疫地区相继封锁，所有员工开始居家办公，面对来势汹汹的疫情，蔚邦没有放弃，坚持共同抗疫，度过难关：在家期间，统计员工每日个人健康情况，汇总工作内容，积极配合领导工作安排。HR部门不仅时刻关注每日疫情动态，为早日复工做准备，更是配合采购部门采购闭环生产物资。改变的是办公地点，不变的是办公态度。抗击疫情是一场没有人能置身度外的战斗，一台电脑、一部手机，职责不忘，时刻在线。

(编辑 王晓雨 Edit by Xiaoyu.Wang)

专业知识

Professional Knowledge

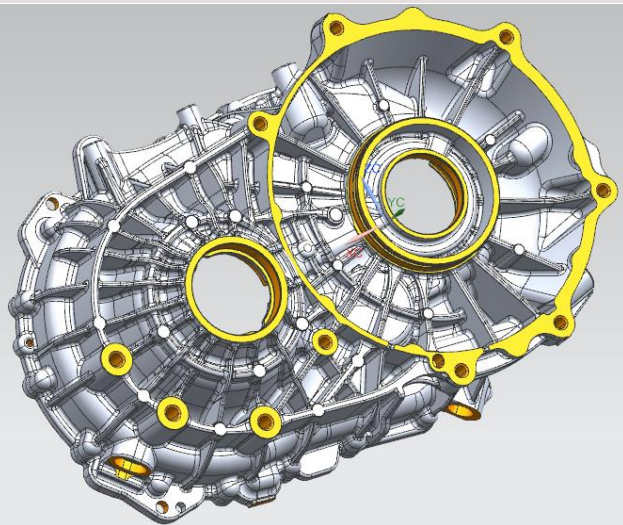
Warehouse management Process 仓库管理流程

1. Warehousing management: arrange the warehouse for the goods to be warehoused, check whether the documents and goods are consistent, and make accurate registration.
2. Pay attention to the loading and unloading specifications and stacking standards of goods.
3. Warehouse management: regularly check the goods and equipment, maintain the cleanliness and safety of the warehouse, and ensure that all operations are standardized.
4. The goods in the warehouse shall be counted and summarized regularly to ensure accurate quantity.
5. Outbound management: the quantity of outbound goods shall be accurate and the procedures shall be complete.

- 1、入库管理：给要入库的货物安排仓位，核对单货是否一致并进行准确的登记。
- 2、注意货物要装卸规范，堆放标准。
- 3、库内管理：定期检查货物与设备、维护仓库的清洁与安全，各项运行要规范、标准。
- 4、对仓库内的货物定期进行统计汇总，确保数量准确。
- 5、出库管理：出库货物数量要准确，并且手续齐全。

(编辑 孙颖 Edit by Sonia.Sun)

Sensors in Industrial Automation Field 工业自动化领域常用传感器



Casting is a process of metal smelting and processing, which usually uses the gravity of metal to cast in the mold. However, aluminum die-casting is not completed by gravity, but by applying a certain amount of pressure. It is similar to injection molding. But it has a set of core pulling and cooling systems with high technical content. In general, materials are sent to the cavity to be cast through a centralized inlet to form parts; Die casting defects can be divided into three categories: geometric defects, surface defects and internal defects.

铸造是金属冶炼加工的一种工艺，通常是利用金属的重力在模具中进行浇铸。但铝压铸不是靠重力完成的，而是施加了一定的压力。有点类似注塑。但它有一套技术含量较高的抽芯，冷却等系统。总的来说，都是通过一个集中入口将材料送到要铸造的型腔内，形成零件；压铸的缺陷可以分为三类：几何缺陷、表面缺陷以及内部缺陷

(编辑 许富生 Edit Fusheng.Xu)

What is the NVH 什么是NVH?

NVH is the acronym of three English words--Noise, Vibration and Harshness. It is the general name of various indicators such as automobile noise, vibration and comfort. Because the vehicle structure vibration will produce noise, which will affect the comfort, and when the comfort has problems, there must be corresponding vibration noise problems. Therefore, the three factors appear at the same time and are inseparable in the vehicle vibration noise, so they are often put together for research. In brief, all the tactile, auditory and visual senses of the passengers in the vehicle belong to the category of NVH research, mainly including the NVH performance of the whole vehicle and the main components of the system. According to statistics, about 1/3 of the problems of automobiles are related to NVH, about 1/5 of after-sales services are related to NVH, and nearly 1/5 of the R&D expenses of major companies are spent on solving the NVH problems of automobiles.

NVH是三个英文单词Noise, Vibration和Harshness首字母的缩写，是汽车噪声、振动和舒适性等各项指标的总称。由于汽车结构振动会产生噪声，进而影响到舒适性，而当舒适性有问题时，必然存在相应的振动噪声问题。因此，三者汽车振动噪声中是同时出现且又密不可分，因而常把它们放在一起进行研究。简单地讲，乘员在汽车中的一切触觉、听觉乃至视觉感受都属于NVH研究的范畴，主要研究包括整车及系统主要零部件的NVH性能。

据统计表明，汽车约有1/3的问题与NVH有关，约1/5的售后服务与NVH有关，各大公司有近1/5的研发费用消耗在解决车辆的NVH问题上。

(编辑 施季雯 Edit Jiwen.Shi)

Lighthouse Factory in China 盘点最新世界“灯塔工厂”

截至2021年9月

全球

90

家

中国

31

家

灯塔工厂



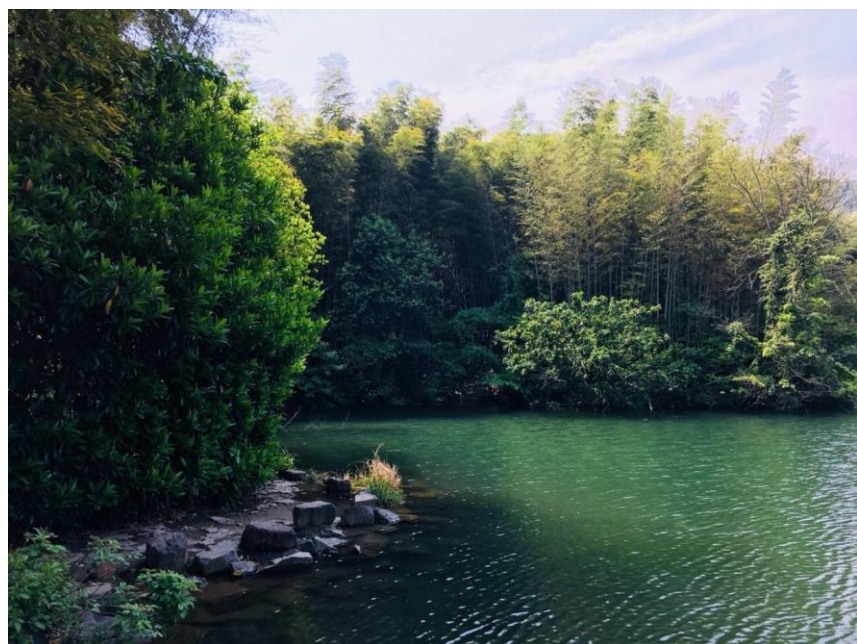
New launch on October 11, 2022 in Geneva, Switzerland! The World Economic Forum announced that 11 new factories (5 in China) have joined its global lighthouse network. They are Ningde Times Yibin Factory, Haier Qingdao Factory, Midea Shunde Factory, Sany Heavy Industry Changsha Factory and Western Digital Shanghai Factory. So far, the global lighthouse network has 114 members, including 42 in China, accounting for more than 1/3 of the total number of lighthouses in the world. The global lighthouse network is committed to leading the application of advanced technologies in the fourth industrial revolution to continuously improve productivity and employee participation, and promote sustainable development and supply chain resilience. In 2022, most manufacturing enterprises will face the recession crisis, but some enterprises will still emerge and achieve large-scale development: among the enterprises newly joining the lighthouse network, Sipra, Danone and Sany Heavy Industries will carry out large-scale digital transformation projects in 20 to 40 factories, involving thousands of employees, and have implemented professional governance. Within the time span of 18 to 24 months, dozens of innovative and standardized technology application cases have been deployed.

2022年10月11日瑞士日内瓦全新发布！世界经济论坛宣布11家新工厂（5家在中国）加入其全球灯塔网络。分别是宁德时代宜宾工厂、海尔青岛工厂、美的顺德工厂、三一重工长沙工厂和西部数据上海工厂。至此，全球灯塔网络已有114名成员，位于中国共有42家，占比达全球灯塔总数的1/3以上。全球灯塔网络致力引领第四次工业革命先进技术的应用，以不断提高生产力及员工参与度，促进可持续发展以及供应链韧性。

2022年，大多数制造业企业面临衰退危机，但仍有部分企业脱颖而出，实现了规模化发展：在新加入灯塔网络的企业中，西普拉、达能以及三一重工在20至40家工厂开展大规模数字化转型项目，涉及数千名员工，实施了专业化治理，在18至24个月的时间跨度内，部署了数十个兼具创新性和标准化的技术应用案例。

周边景点推荐——石塘竹海

石塘竹海位于南京市江宁区横溪街道前石塘村，南距南京市中心38公里，西距马鞍山市区25公里。镇南方位属横山山脉，镇西方位属云台山山脉。景区拥有连片翠竹3万亩，与九龙湖相依相偎，境内生物多样，构成以茶山、竹海、松涛为主体的自然旖旎风光，是江苏首个“旅游示范村”。主城方向乘坐南京地铁1号线或南京地铁10号线至安德门站换乘712线公交车至横溪后再换乘966线公交可直达景区；江宁方向可在金宝市场、河定桥乘坐712线至横溪后再换乘966线公交可直达景区。



Shitang Bamboo Sea is located in Qianshitang Village, Hengxi Street, Jiangning District, Nanjing City. It is 38 kilometers south of Nanjing downtown and 25 kilometers west of Ma'anshan downtown. The south of the town belongs to Hengshan Mountain Range, and the west of the town belongs to Yuntai Mountain Range. The

scenic spot has 30000 mu of green bamboos, nestling close to the Jiulong Lake, and is rich in biodiversity. It is the first "tourism demonstration village" in Jiangsu, with tea mountains, bamboo seas, and pine forests as its main parts. Take Nanjing Metro Line 1 or Nanjing Metro Line 10 to Andemen Station in the direction of the main city, transfer to Line 712 to Hengxi, and then transfer to Line 966; In the direction of Jiangning, you can take Line 712 at Jinbao Market and Hedding Bridge to Hengxi, and then transfer to Line 966.